

# Greater Rockaway Community + Shoreline Enhancement Plan

Community Workshop 2 - Phase 2  
February 9, 2023

WXY

 RISE

 eDESIGN  
DYNAMICS

# Welcome and Introductions

Welcome and  
Introductions

# Project Team

The logo for WXYZ, featuring the letters W, X, and Y in a bold, black, sans-serif font, with an 'X' that has a diagonal slash through it.The logo for RISE, with the word 'RISE' in a bold, green, sans-serif font. A small green bird is perched on the top of the letter 'I'.The logo for eDESIGN DYNAMICS, featuring a stylized blue and green water drop icon to the left of the text 'eDESIGN DYNAMICS' in a blue, sans-serif font.

Design Team

## Project Partners

The logo for the NYC Department of Housing Preservation & Development, featuring the letters 'NYC' in a large, blue, bold font, with the full name below it in a smaller, black font.The logo for NYC Parks, featuring a green maple leaf inside a green circular border, with the text 'NYC Parks' below it.The logo for the US Army Corps of Engineers, featuring a red square with a white castle tower icon, and the text 'US Army Corps of Engineers' below it.The logo for the Department of Environmental Conservation, New York State, featuring a circular emblem with a blue sky, green hills, and a blue body of water, with the text 'DEPARTMENT OF ENVIRONMENTAL CONSERVATION' and 'NEW YORK STATE' around the perimeter.

This project is funded by the National Fish & Wildlife Foundation.

# Meeting Goals

## Why are we here today?

- Gain context about the Greater Rockaway Community and Shoreline Enhancement Plan
- Explore the final planting plan for Rockaway shoreline
- Learn about specific ways to partner with RISE on community stewardship and discuss your ideas, needs, and questions for your partnership type
- Commit to a role in this effort that works for you, and learn about next steps

# Agenda

- 1) Welcome and Introductions
- 2) Plan Update and Overview
- 3) Final Planting Plan Design
- 4) Project Partner Overview
- 5) Q&A
- 6) Breakout Groups & Share Out
- 8) Next Steps

Welcome and  
Introductions

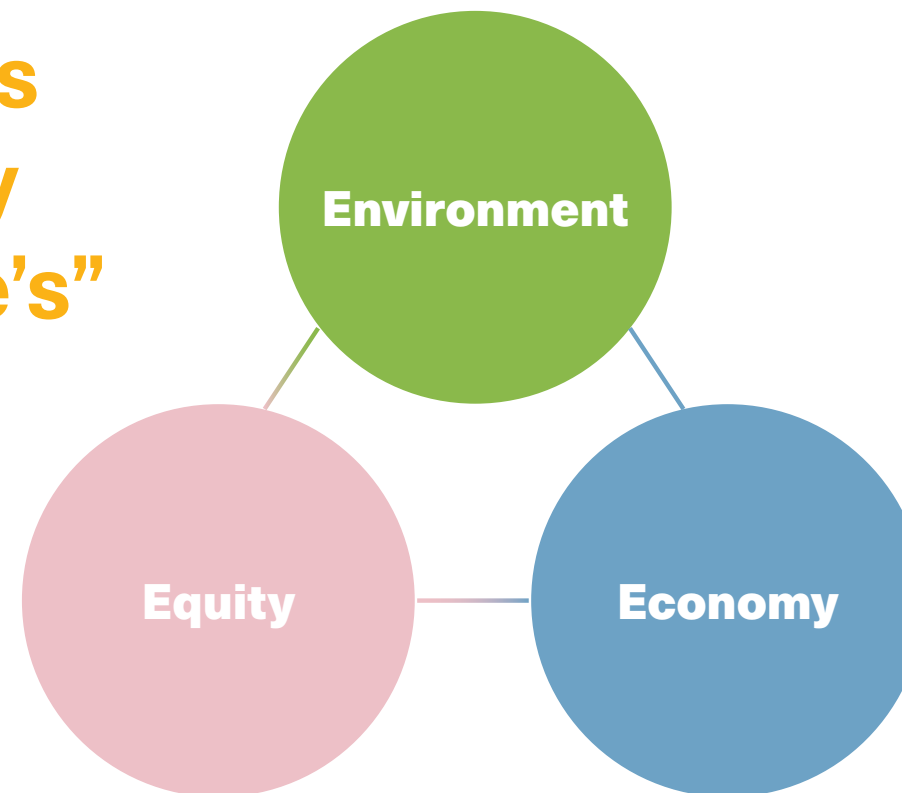
# Poll 1: Introductory Poll

# Plan Update and Overview

# Greater Rockaway Community & Shoreline Enhancement Plan is...

A **community-centered** plan for the **restoration of the dunes** in Greater Rockaway. The plan proposes a **model for environmental stewardship** led by youth and local civic organizations, in cooperation with land owners and agencies.

The plan is  
guided by  
“the three e’s”





# Plan Recommendations

The plan identifies several opportunity sites for planting, stewardship, and related efforts.

A set of four pilot projects were developed through engagement with stakeholders, Shore Corps, and community members.



**Green  
Economy**



**Education &  
Awareness**



**Youth  
Employment**



**Environmental  
Stewardship**

# Arverne East Development Native Plant Nursery

RISE is working with Arverne East Developers to construct a **native plant nursery** at Beach 42nd St. Conceived of by local stakeholders in Phase I, it will be used **grow native plants** from seed exclusively to be used in the Greater Rockaway dune restoration, and for **stewardship training** and programming.



Source: Billie Co Ltd.

# Project Timeline

## Phase 1

Sept. 2020- Sept. 2021

Steering committee engagement

Shore Corps engagement

Community engagement

Existing Conditions Assessment

Plan published

## Phase 2

Jan. 2022- June 2024

Site assessment

Planting plan and site design

Completion of site design

Pilot school and community stewardship  
workshops

Pilot planting program

←  
**We are  
here!**

# Project Goals

## Phase 1

Sept. 2020- Sept. 2021

**Facilitate** an inclusive engagement and community design process

**Foster** consensus-building among the public agencies charged with managing the shoreline and between the diverse residents of the peninsula

**Envision** an adaptation and stewardship plan that promotes equity, supports economic growth, and enhances the natural environment

## Phase 2

Jan. 2022- June 2024

**We are here!**

**Build** upon engagement from Phase 1 to raise awareness about key environmental issues and ensure community ownership in final design

**Develop** a 95% final design, including completing all permitting and approvals

**Engage** community members and Shore Corps interns in implementation of field activities to set up the project for long term success

# Community Stewardship

**A collective responsibility to protect and restore local ecosystems through the preservation and maintenance of the surrounding environment, emphasizing:**

- Local ownership of environmental restoration efforts
- Local voice and participation in planning and implementation

# The Dune Ecology

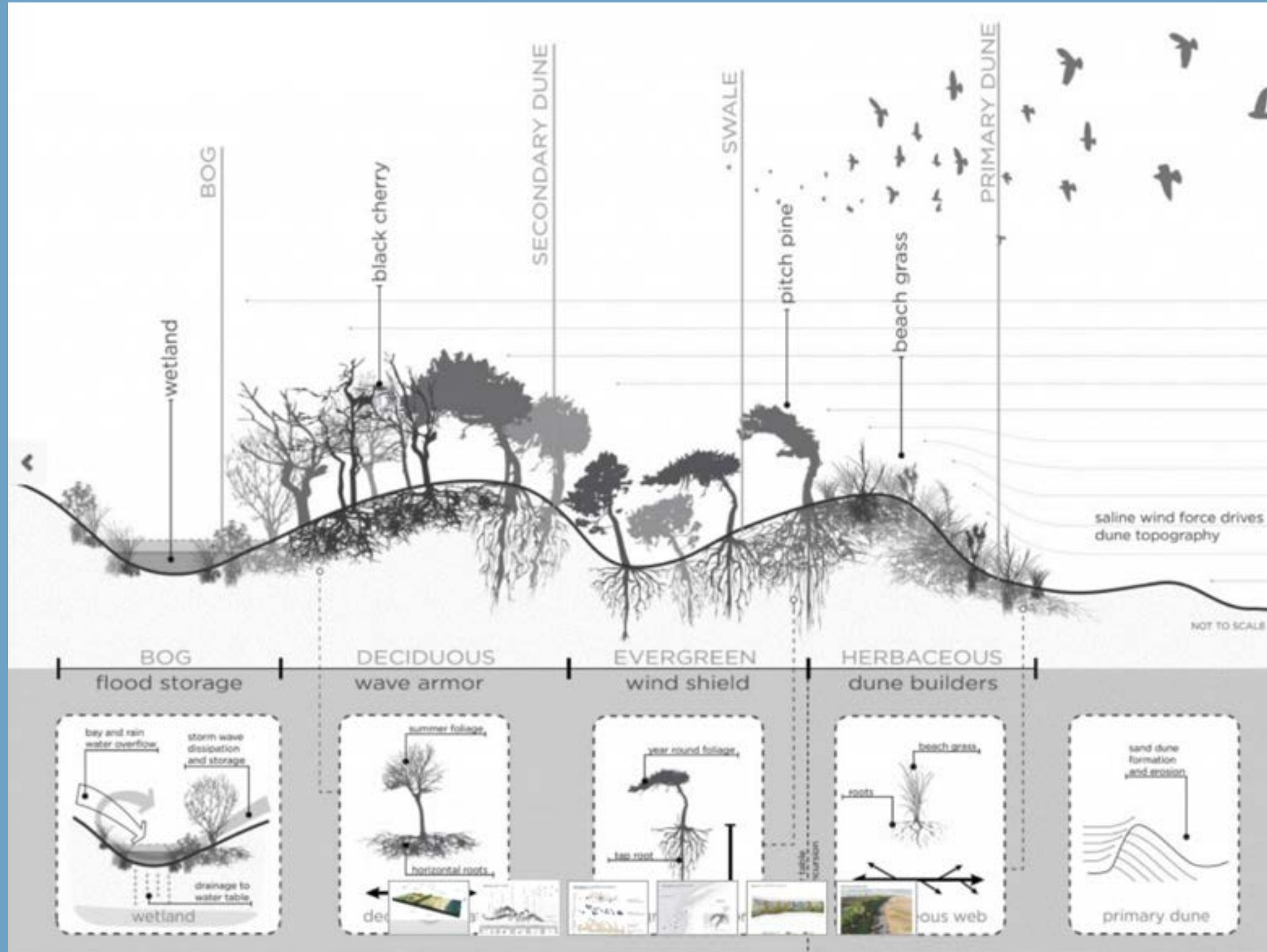


Image courtesy  
of Local Office

# Pilot Concession Program

## Proposed pushcart/bike concessions program for Summer 2023

### Non-motorized cart advantages:

- Flexibility to move to open beaches
- Less obstruction of foot traffic, noise, and trash
- Smaller footprint
- Feasible for more local concessionaires and vendors



# Pilot Concession Program

## Pilot Goals:

- Establish a model for concession agreements that is cost effective and easy to navigate
- Involve more local vendors and food businesses
- Create summer job opportunities for youth and local residents
- Gather community input at the end of the season to shape future steps





# Poll 2: Supporting the Beach Economy

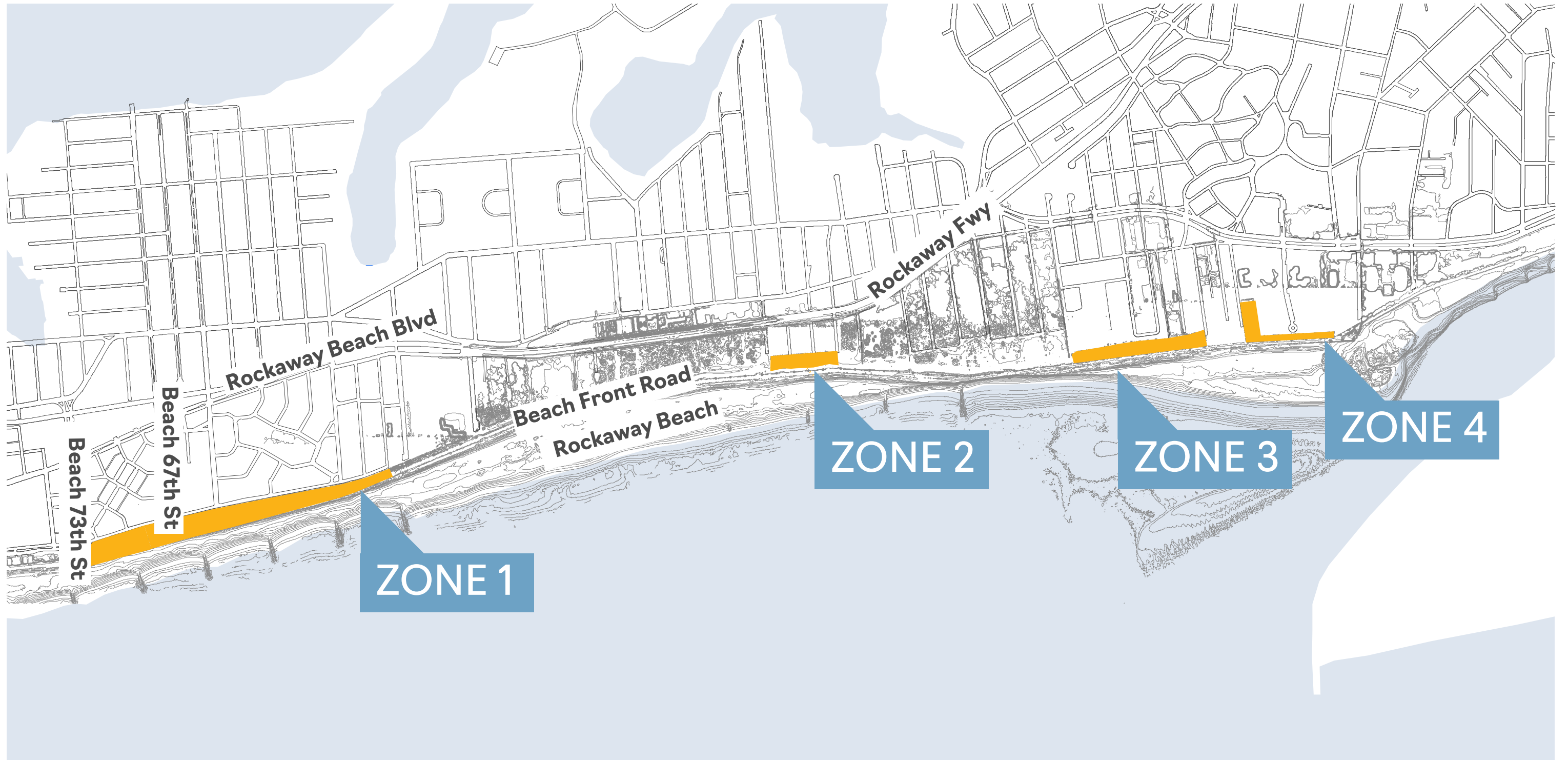
# Final Planting Plan Design

# Plan Area

The plan focuses on an approximately **four-mile stretch of shoreline** in the Rockaway Peninsula, extending from Beach 9th to Beach 109th Streets.



# Selected Zones



# Objectives

- Increase resilience by improving the dune as a buffer
- Involve the community in restoration
- Create job opportunities to support local beach economy

Image courtesy of Local Office



# Why do restoration?

**Restoration helps ecosystems recover from damage and become more resilient to future climate events.**

## **Examples of ecosystem damage:**

- Urbanization
- Invasions of non-native species
- Land clearing
- Coastal erosion

Restoration can improve the livelihood of communities by supporting an active relationship between humans and the environment.

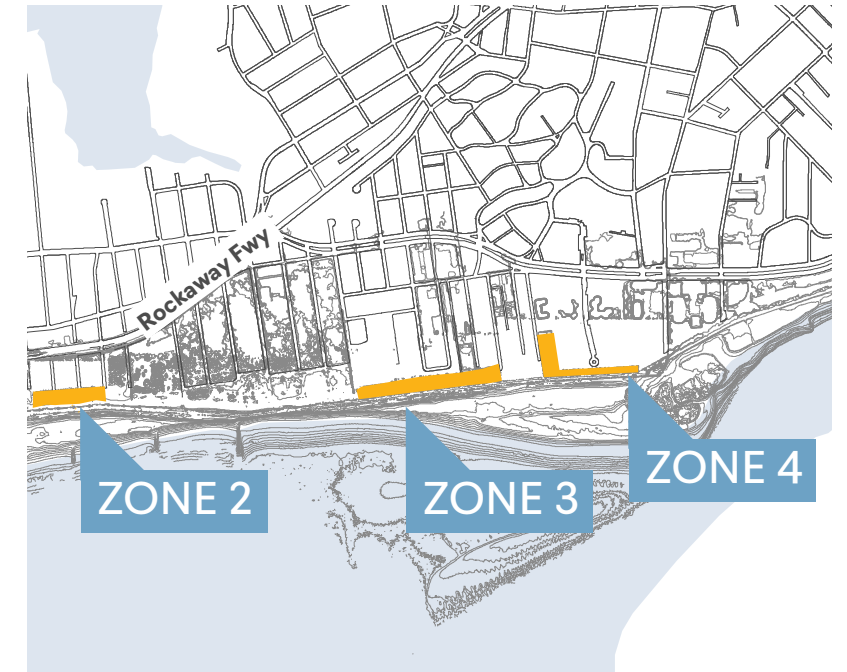
# Selected Zones: Zone 1



**Beach 73rd street to  
Beach 59th street**

**Implement invasive  
species management for  
Phragmites, Japanese  
knotweed, mugwort,  
and other weed species.  
Densely plant sparse  
areas with native  
coastal grassland and  
shrubland species.**

# Selected Zones: Zone 2

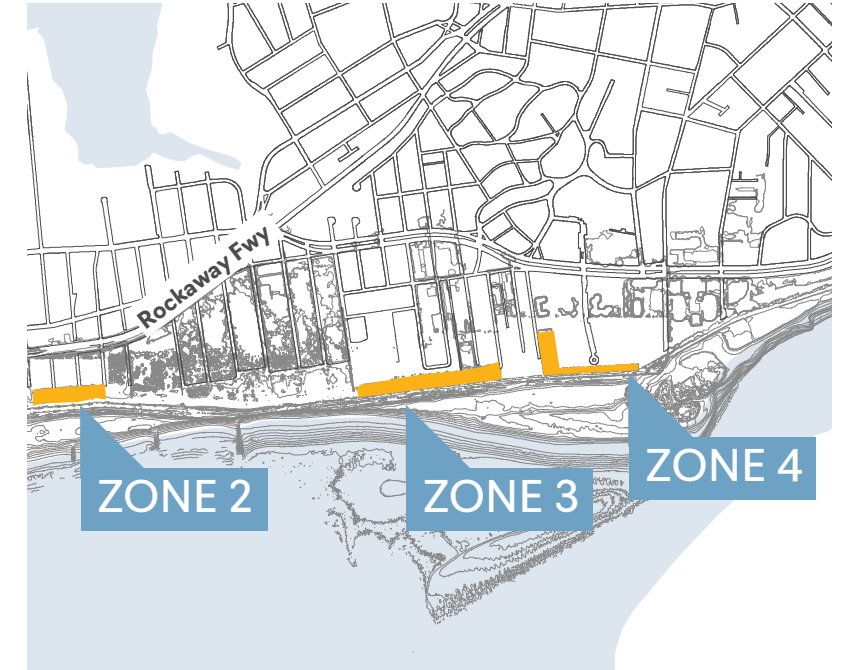


**Beach 44th street to  
Beach 41st street**

**Plant sandy areas  
with native coastal  
shrubland species to  
deter vehicle traffic.  
Preserve existing dense  
shrubby vegetation.**



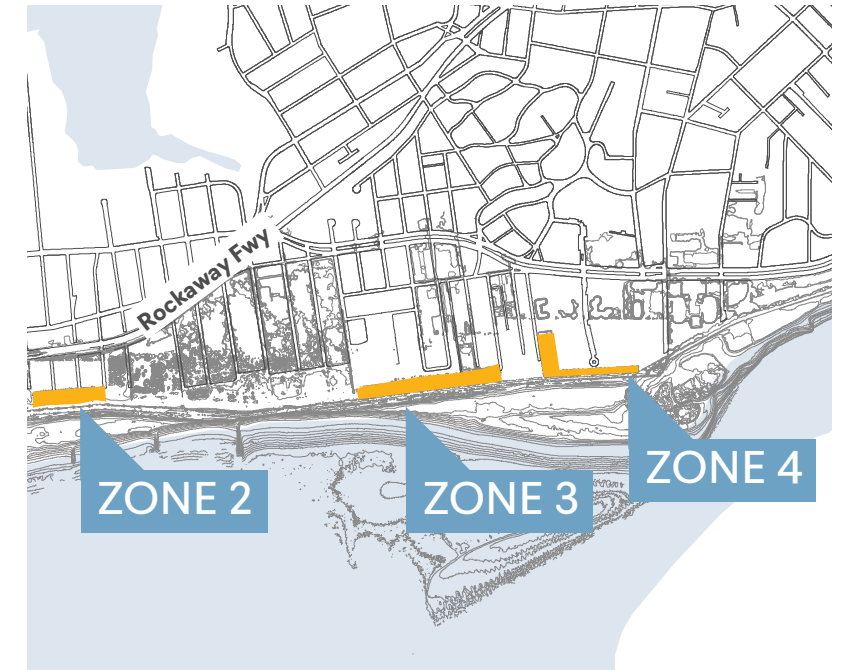
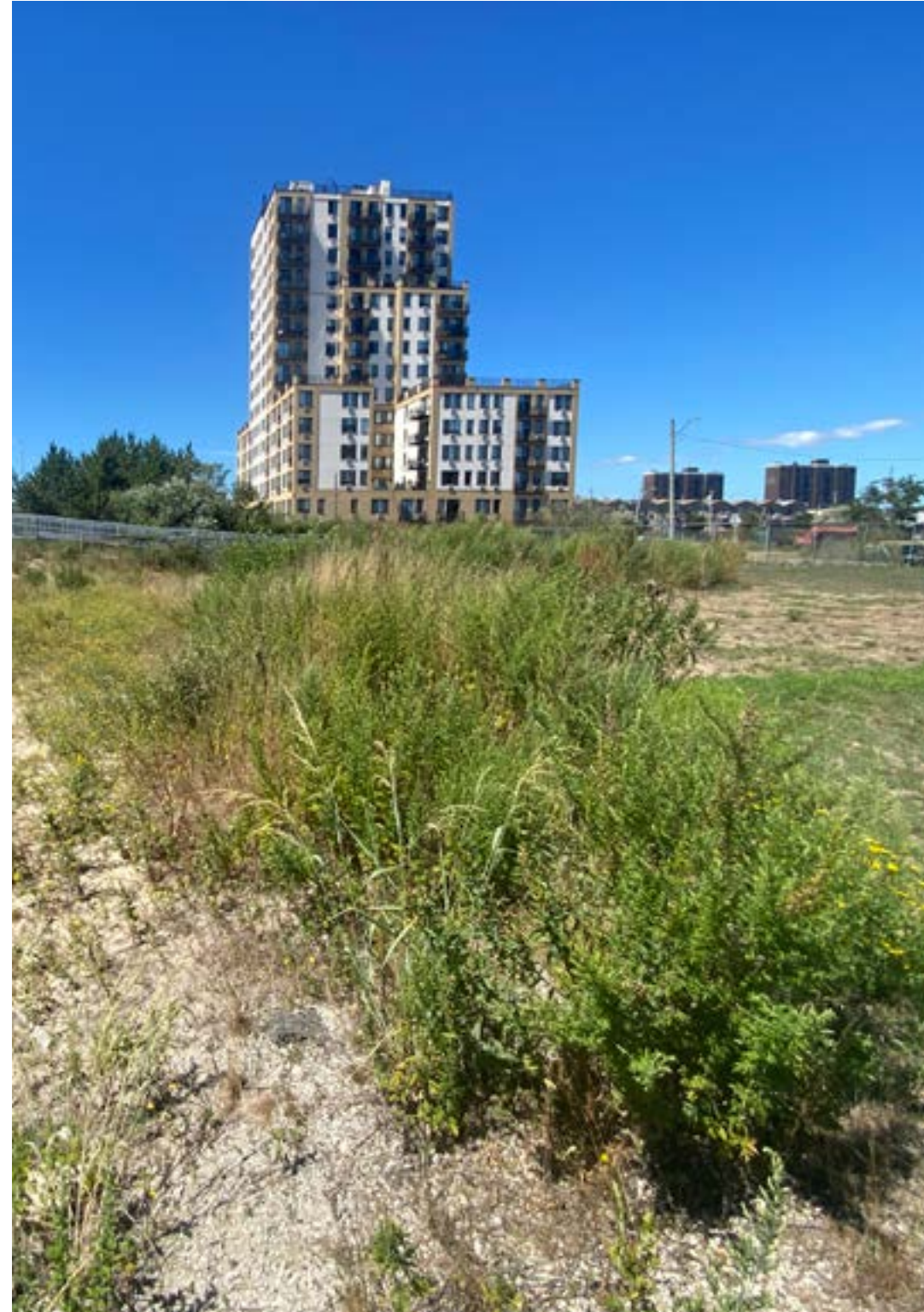
# Selected Zones: Zone 3



**Beach 32nd street to  
Beach 26th street**

**Implement invasive  
species management  
for Japanese knotweed,  
mugwort, and other  
weed species. Densely  
plant sparse areas with  
native coastal grassland  
and shrubland species.**

# Selected Zones: Zone 4



**Beach 24th street to  
Beach 19th street**

**Implement invasive  
species management  
for mugwort, remove  
some debris, and place  
clean sand. Replant  
with native coastal  
grassland species.**

# Pilot Program Timeline



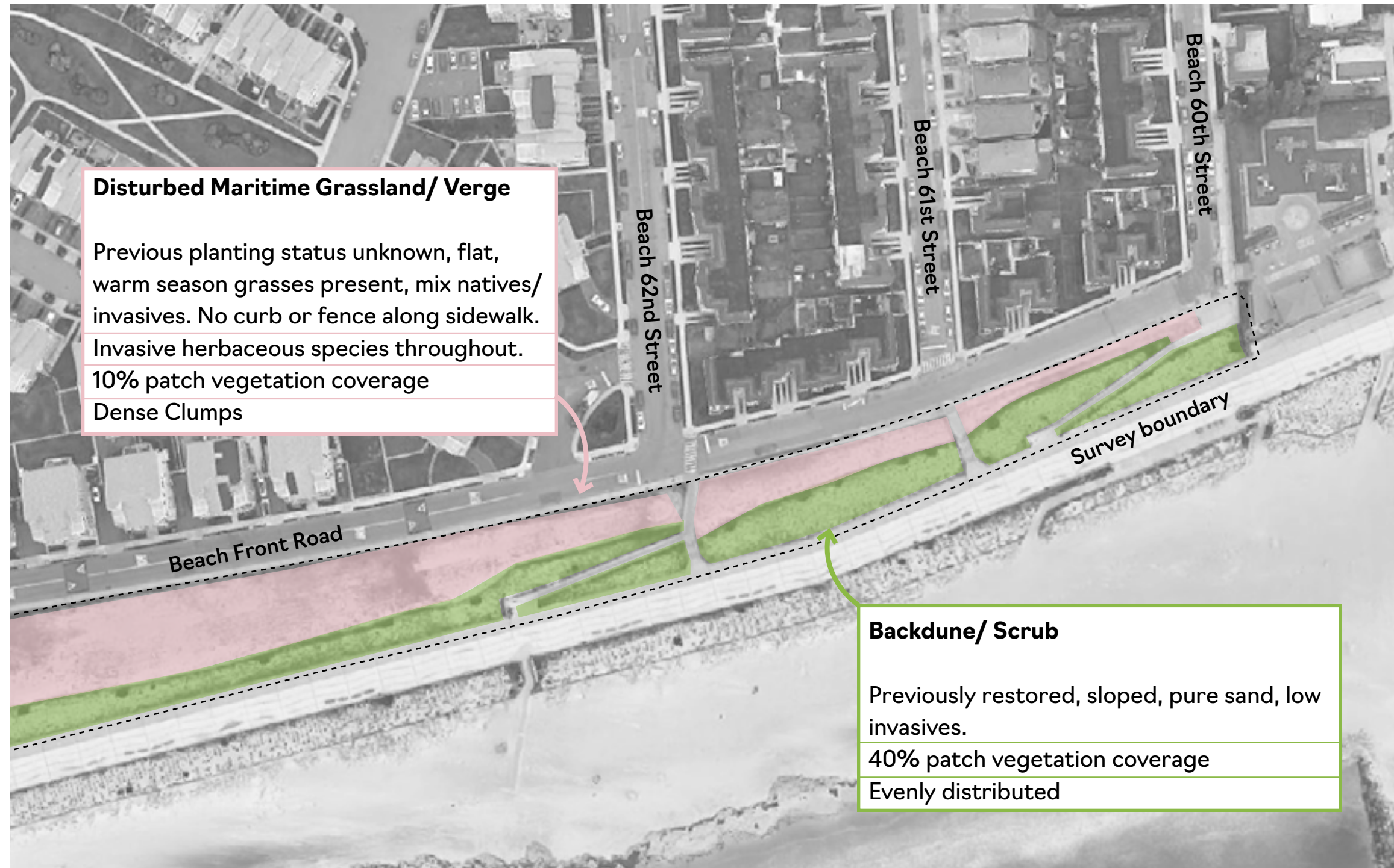
**Part 1**  
**Spring '23**

**Zone 1**  
**Sections 4-5**

**Part 2**  
**Fall '23**

**Zone 1**  
**Section 4**

# Zone 1: Existing conditions





## Legend

- Backdune/Scrub
- Disturbed Maritime Grassland/ Verge

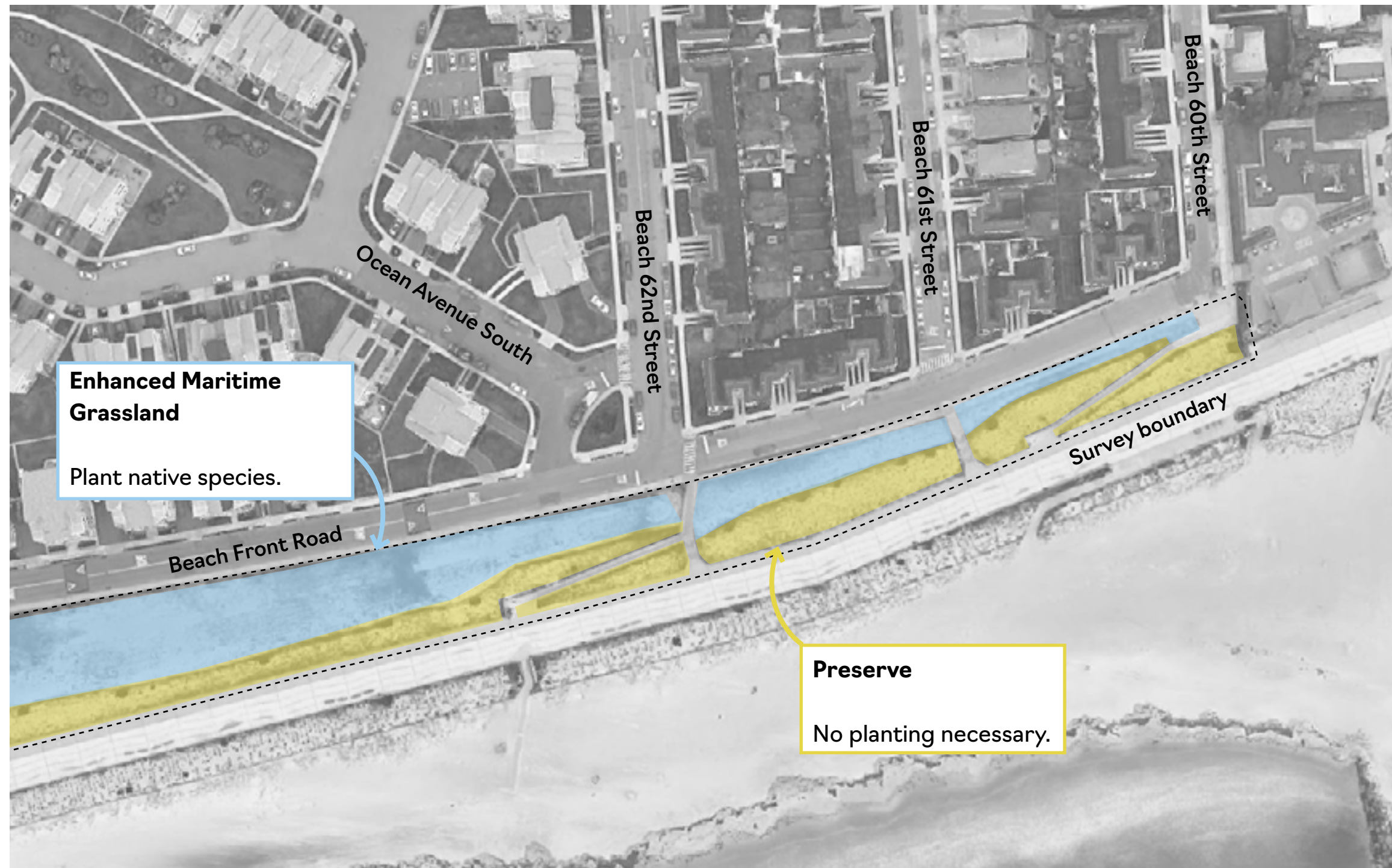
# Zone 1: Removals plan



## Legend

-  Invasive species control
-  Preserve

# Zone 1: Planting plan



## Legend

- Enhance
- Preserve

# Zone 1 Intervention schedules

## To be planted



American Beachgrass



Broom Sedge



Seaside Goldenrod



Virginia Creeper



Common Milkweed



Little Bluestem



Bayberry



Shadbush



Ribwort Plantain



Hare's Foot Clover



Sheep's Sorrel

## To be removed



Phragmites



Mugwort



Japanese Knotweed

# Pilot Program Signage

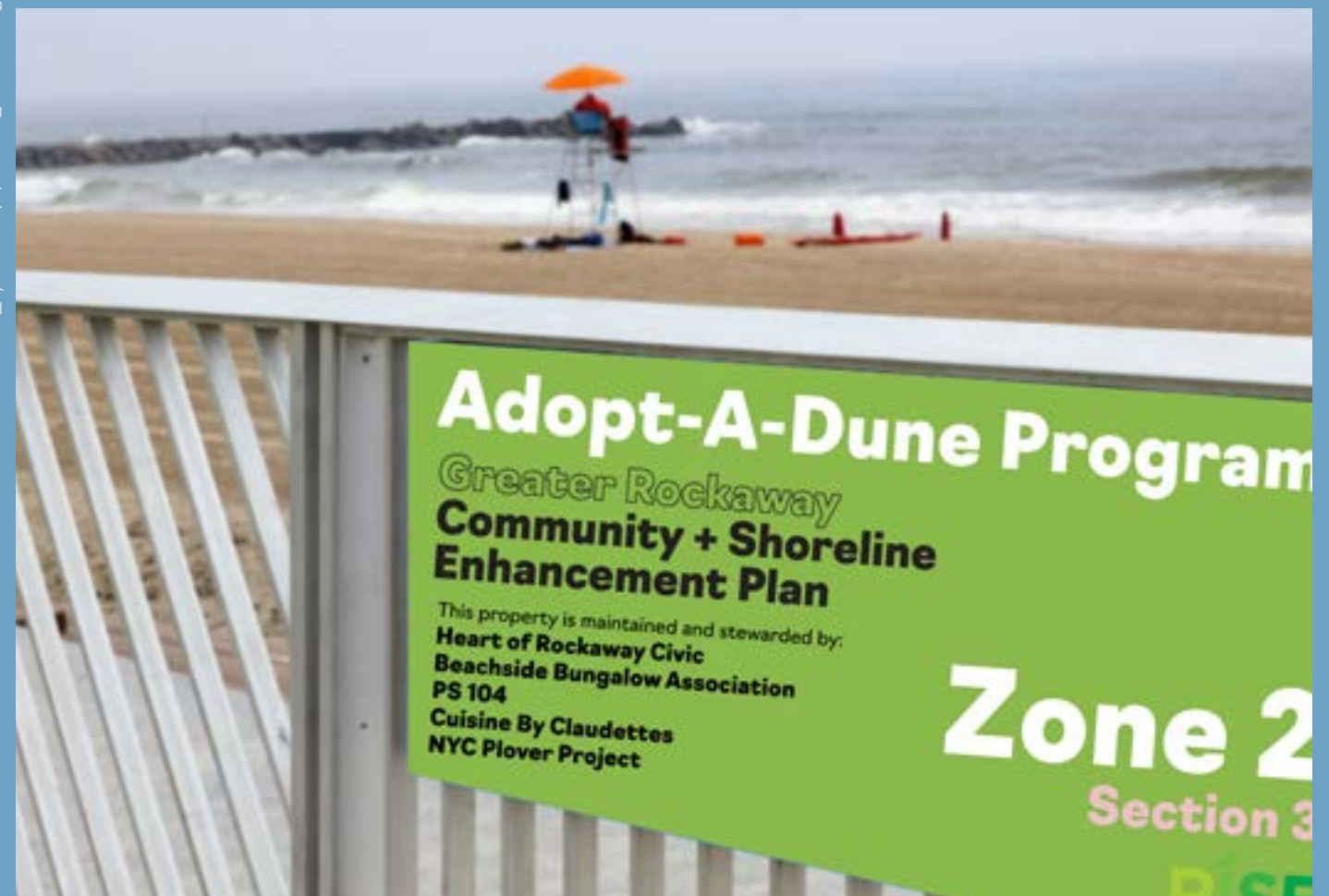
Signage in the planting area will recognize the groups maintaining that section.

Source: Peter Mauss / Esto



Sign Example Mockup 1

Source: Peter Mauss / Esto



Sign Example Mockup 2



# Poll 3: Invasive Plants

Source: NOAA



A

American beachgrass

Source: New York State Parks



B

Milkweed

Source: Nature of New York



C

Phragmites

Source: Rich Stevenson



D

Camphorweed

Which of these plants is invasive in the Rockaways?

# Project Partner Overview

# What is the role of a project partner?

- Groups, organizations, and people of all ages, backgrounds and abilities who contribute to the Greater Rockaway stewardship plan.
- Partners commit to a particular set of roles, responsibilities (and possible trainings) that they feel they have the capacity for.
- Partners are celebrated by RISE and the greater community, and recognized through events, resources/technical support, public recognition, and more.

# Overview

## Individuals



**LOCAL  
DOCENT**



**COMMUNITY  
ADVOCATE**



**BOTANIST**



**SUPER  
STEWARD**

## Organizations



**SCHOOL**



**CIVIC**



**LOCAL  
BUSINESS/  
NON PROFIT**

# LOCAL DOCENT



**A volunteer interested in sharing their knowledge of native vegetation and the dune landscape with the general public.**

## **Responsibilities**

- Attend regular educational workshops
- Lead tours of the native plant nursery & dune preserve
- Share informational materials with your contacts

# COMMUNITY ADVOCATE



**A messenger who shares information on the project to raise awareness of environmental risks and potential stewardship opportunities.**

## Responsibilities

- Be a source of knowledge on the project
- Recruit potential partners and volunteers by sharing information on social media, email lists, at community meetings/events, and by word of mouth

# BOTANIST



**Someone interested in growing their expertise in the shoreline ecosystem and plant care techniques.**

## **Responsibilities**

- Participate in regular educational workshops and plantings (approx. 1 per month)

# **SUPER STEWARD**



**An volunteer who regularly participates in in-person plantings, monitoring, and maintenance.**

## **Responsibilities**

- Participate in educational workshops and events (approx. 1 per month)
- Participate in plantings, maintenance, and monitoring of the site



# SCHOOL

A public or private school committed to integrating stewardship into curricula this year.



## Responsibilities

- Incorporate topics like restoration and climate change into your classrooms
- Organize stewardship field trips with your students
- Participate in quarterly educational partner forums

**Participating Rockaway Public Schools: PS43, PS43, PS104, PS105, PS106, PS183Q, PS197Q, PS317, PS362Q**

# CIVIC

**A local civic organization excited about building relationships with community groups and agencies.**



## Responsibilities

- Share information about events with your members
- Gather input on community concerns
- Maintain a portion of the planting area, including coordinating planting and maintenance activities with your members and followers

# LOCAL BUSINESS/ NONPROFIT

A local business or non-profit that can subsidize community events or restoration projects.



## Responsibilities

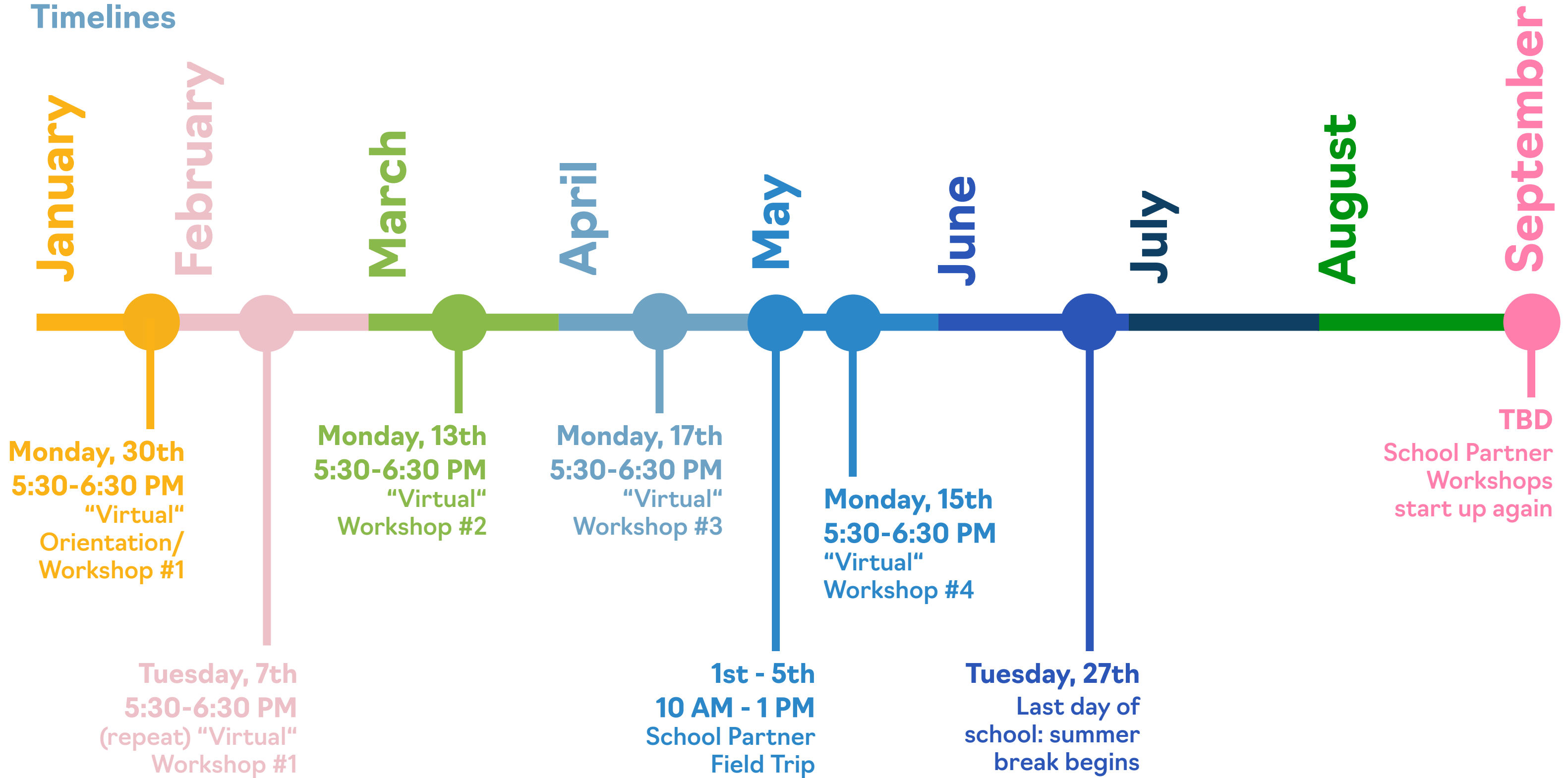
- Sponsor a planting or public school program at the dune preserve or native plant nursery
- Maintain a portion of the planting area, including coordinating planting and maintenance activities
- Host a food/educational bike/pushcart at a particular area of boardwalk (Beach 9th St - Beach 1116th St)

# RISE's Role

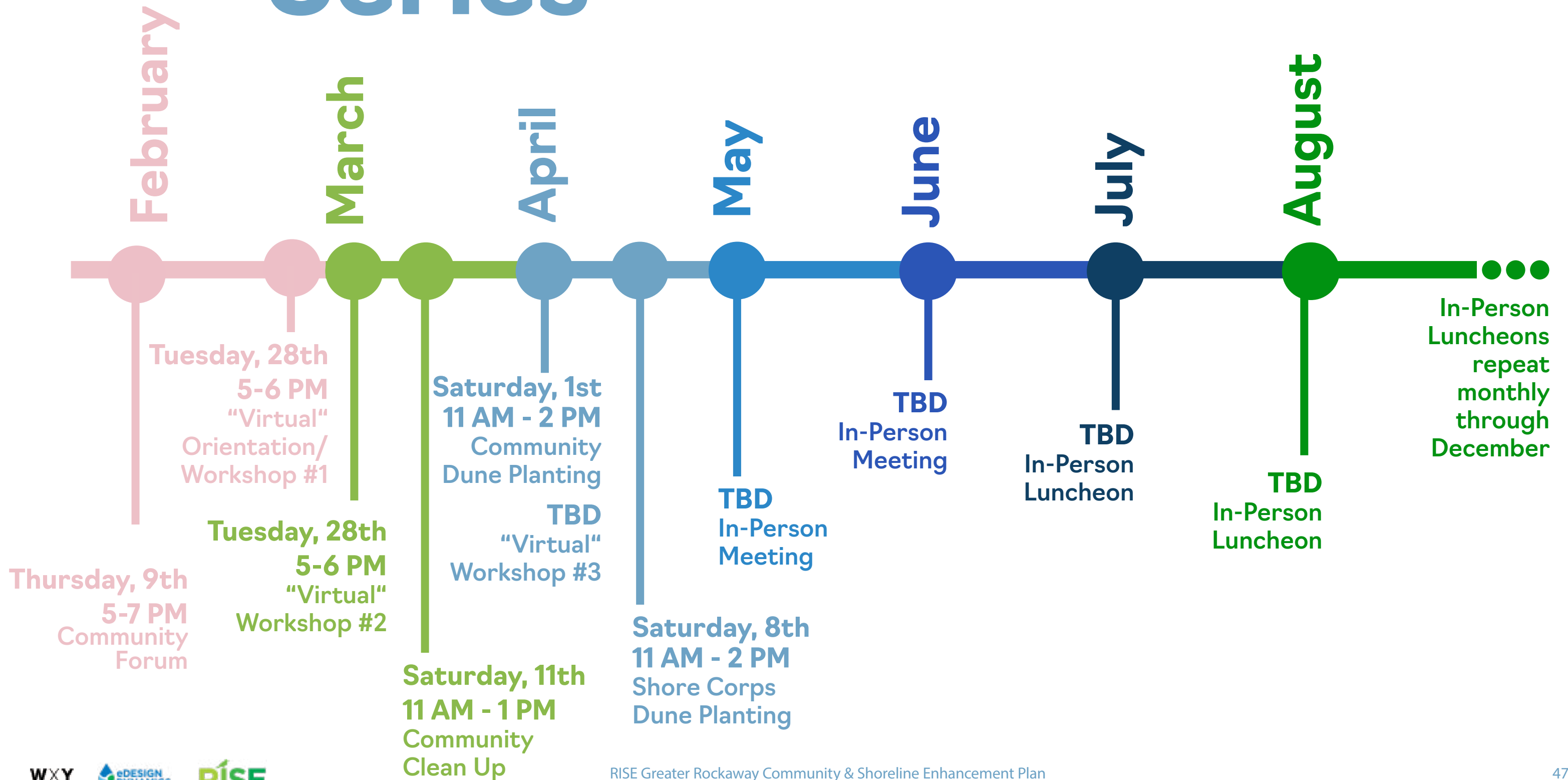
- Organize educational workshops and volunteer plantings
- Take care of permitting and insurance, including coordinating with land owners and agencies
- Provide resources for steward partners including: training, planting tools, equipment, storage space
- Hire & train team of designated stewards as “zone gardeners” to care for the native plant nursery and dune preserve long term
- Establish a core group of educational school partners to assist with trainings and plantings with school aged children.

# Timelines

# School Workshop Series



# Community Partner Series



# Q&A



# Breakout Groups

# Goals

- Hear from you about your interest in one of the partner opportunities
- Discuss your ideas around support, resources, and recognition for partners
- Discuss what you need to be successful as a partner
- Reflect on what this project means for you/your organization
- Create an environment of mutual respect

# Structure

## Individuals

- Group 1: Docents and Advocates
- Group 2: Botanists and Super Stewards

## Organizations

- Group 3: Schools
- Group 4: Civic Associations
- Group 5: Local Business or Non-Profits

# Share Out

Breakout  
groups

# Poll 4: Closing Poll

# Closing and Next Steps

# Next Steps

- Complete interest survey (to be shared via email)
- Spring stewardship training workshops and planting events
- First in-person planting/ground-breaking on April 1



thank you.