

Community Visioning for Vacant Land following Managed Retreat in Edgemere, Queens, N.Y.

Exploring possibilities for vacant land



Collective for
Community, Culture
and Environment



RISE

ROCKAWAY
INITIATIVE FOR
SUSTAINABILITY
AND EQUITY

The Nature
Conservancy



Possibilities

Waterfront Access

Tools of Economic Development and Energy

**Food + Community Gardens + Fruit Orchards + Flowers
and Green Houses**

Fishing + Fish Farming

Connectivity + Biking + Repairshop and Parking

Recreation + Kayaking + Canoeing

Pod Park and Happy Streets

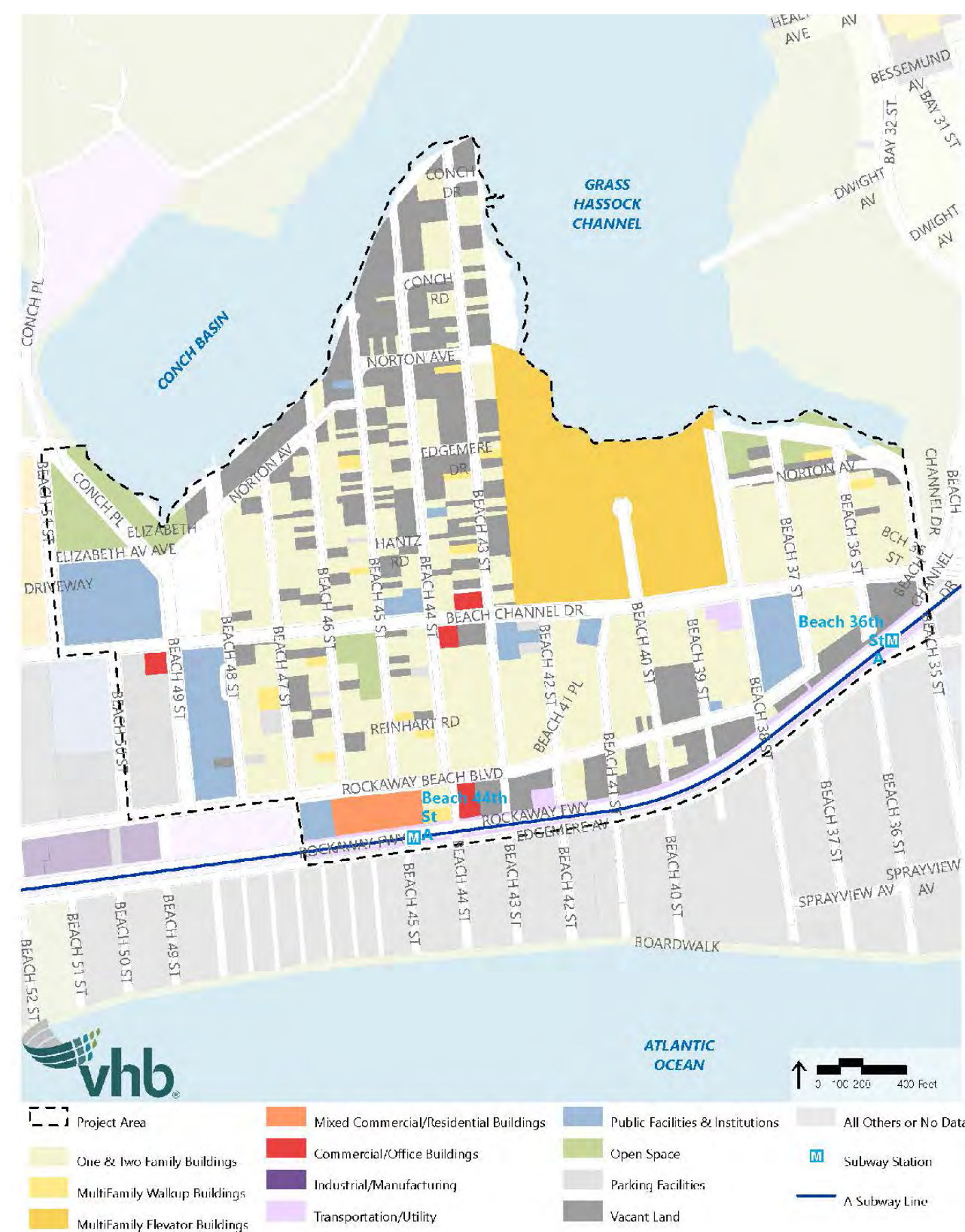
Continued Education: Space for Arts and After-School

Activity Space + Childcare

Edgemere Living with Water



Edgemere Project Boundary



Edgemere Living with Water

NEW YORK CITY DEPARTMENT OF CITY PLANNING: FLOOD HAZARD MAPPER_TIDAL FLOODING



<https://dcp.maps.arcgis.com/apps/webappviewer/index.html?id=1c37d271fba14163bbb520517153d6d5>

USACE Bayside Flood Protections

U.S. Army Corps of Engineers:
Bayside shoreline features
will protect against regular
“sunny day” tidal flooding
and small coastal storms and
sea level rise – NOT a huge
Sandy-like storm.

Design has begun on 4 to 5
foot-high hard berms and
soft green infrastructure that
will protect the community
for the next 50 years from
bayside tidal flooding.



Edgemere's Existing Shoreline



Waterfront Access _ Waterfront Protection

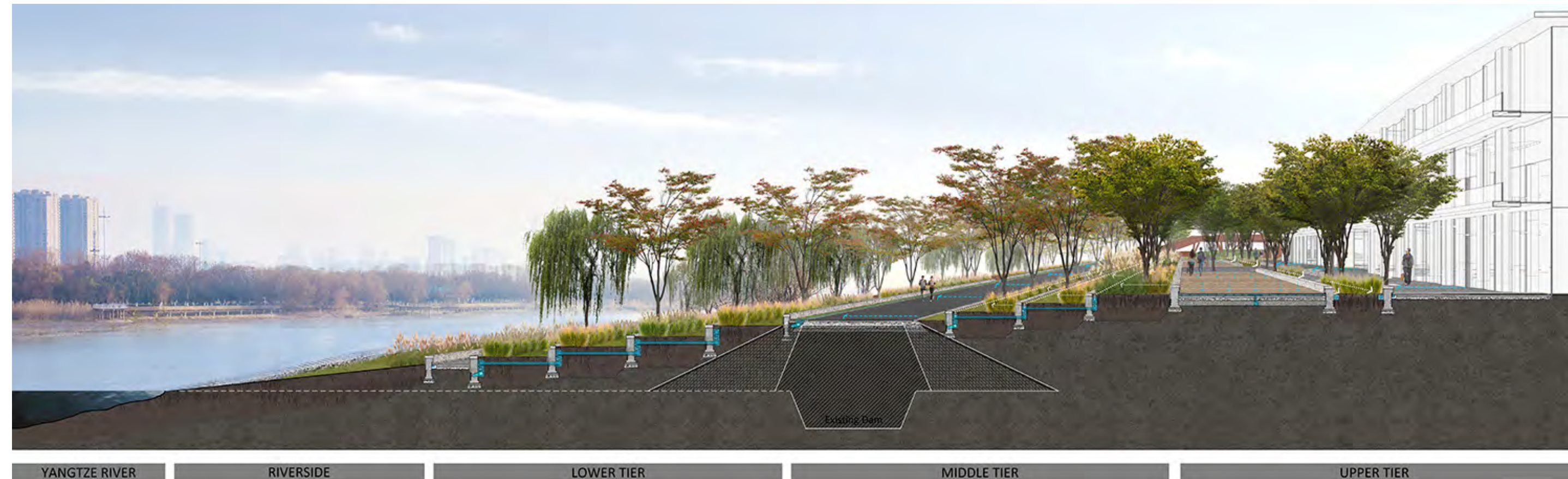
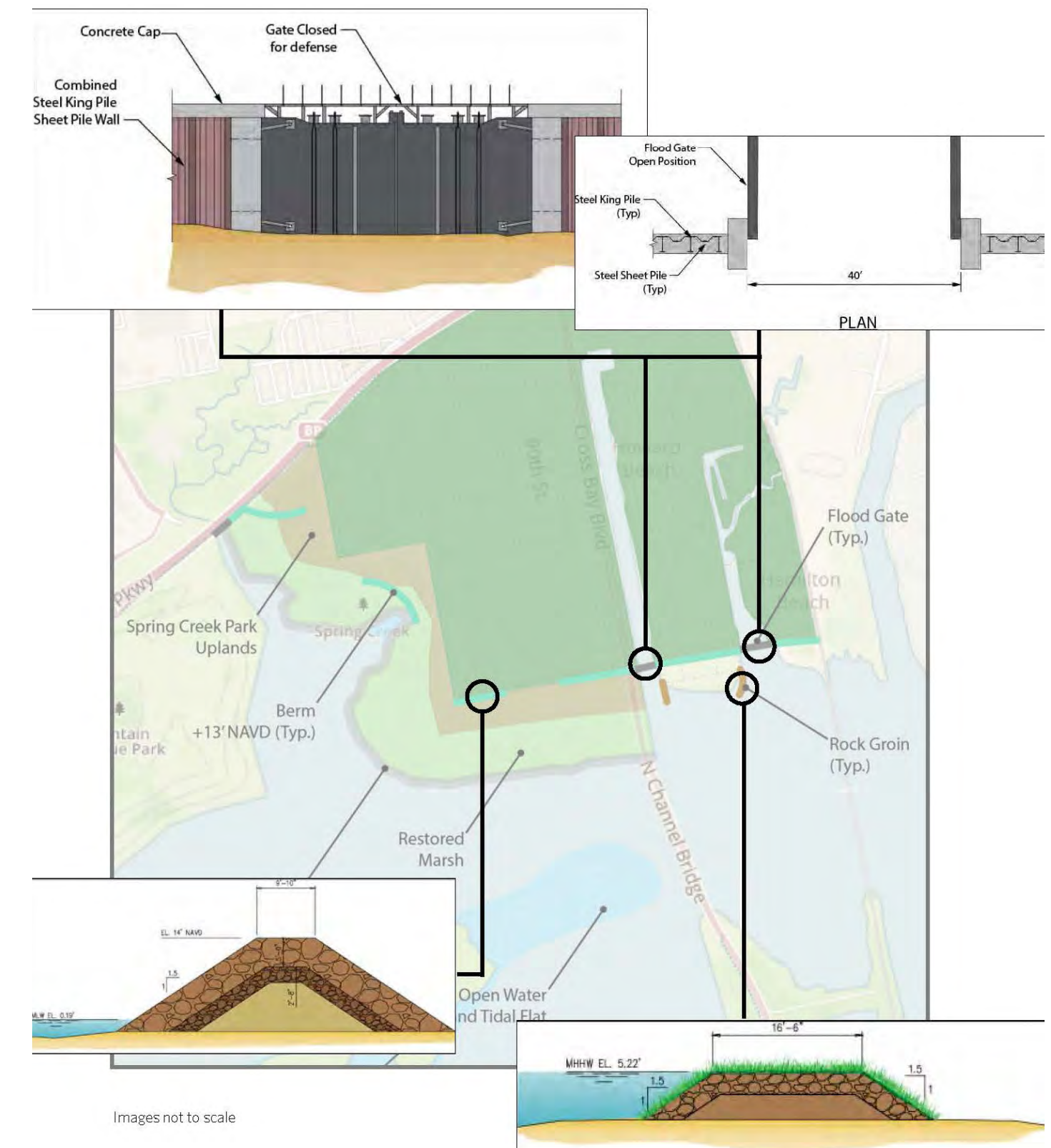


Figure 5-22 Alternative 4: Element Diagrams



above and lower right:
examples of edge conditions with IFPS
with terraced and landscaped earth
berms

far right:
USACE examples for Integrated Flood
Protection Systems



Waterfront Access _ Waterfront Protection



Waterfront Access _ Waterfront Protection

Edgemere, Queens: A Study by Pratt Institute, GCPE + U ARCH, 2019 Fall

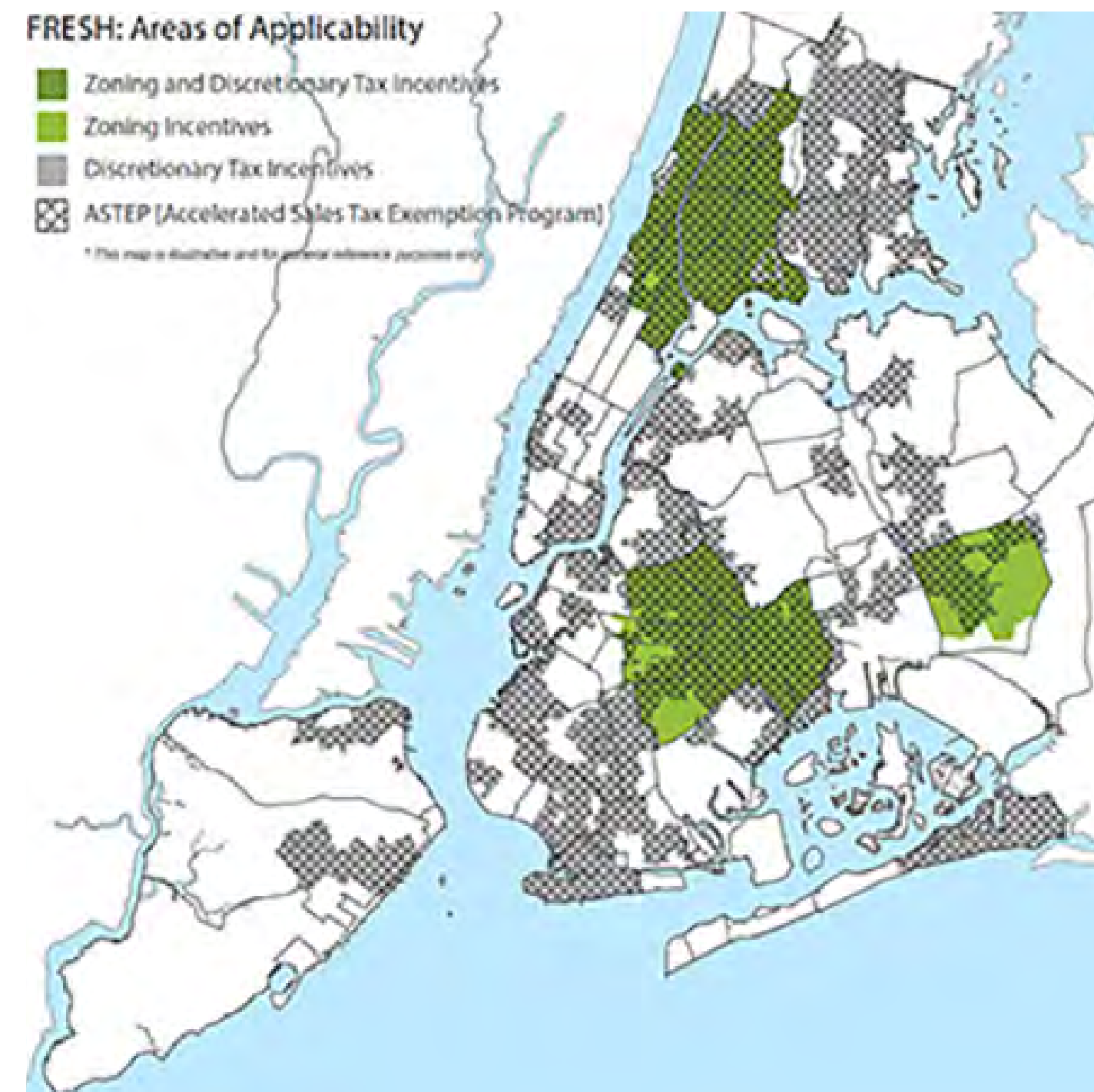
This holistic proposal identified the vulnerable areas for farming. Similar strategies are implemented in Netherlands where low-lying areas are reserved for growing produce for example, flowers which contribute greatly to nation's economy. Glasshouses line up waterfront areas for year-around-growing, while canals create a drainage system for the water.

In this project, an Integrated Flood Protection System (IFPS) lines up the shores of Conch Basin and Norton Basin, thereby protecting the land behind from sea-level rise for a considerable time period.

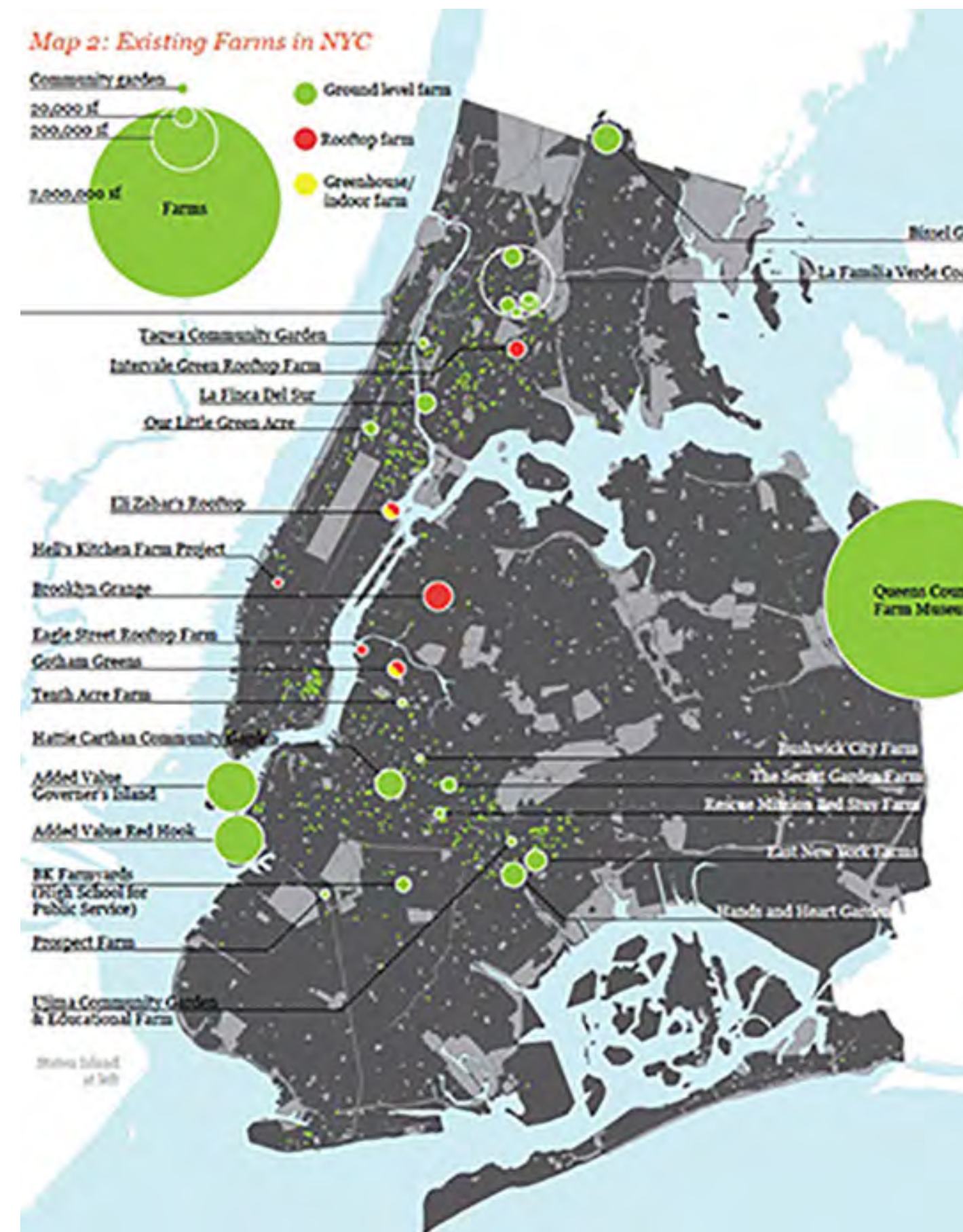
However, now, protected from the sea level rise (by the sand dunes and the IFPS along the perimeter,) the low-lying land becomes susceptible to stormwater impact.



FOOD _ Community Gardens



Edgemere is within the FRESH Areas in the City for Discretionary Tax Incentives.



NYC Department of City Planning created a map to identify area in need of fresh food access. Factors such as concentration of stores, walkability, number of families with children in poverty contributed to the index. The FRESH program provides zoning and financial incentives for the creation of grocery stores, especially for fresh produce, for example fruits and vegetable in these neighborhoods. Edgemere is identified as an underserved community.

The lack of fresh produce greatly impacts the general wellness of the residents of all ages and contribute to their (poor)diet. Just providing retail space for the fresh produce is not a solution for the challenge as the economic disparity and access to fresh produce in these identified neighborhoods are directly proportional.

Acess to healthy foods could be promoted through farmers markets and especially through community gardens whereby the community is enaged in the production of such goods. The benefits of growing, selling/sharing, processing, consuming are numerous in addition to raising awareness for healthy diet..

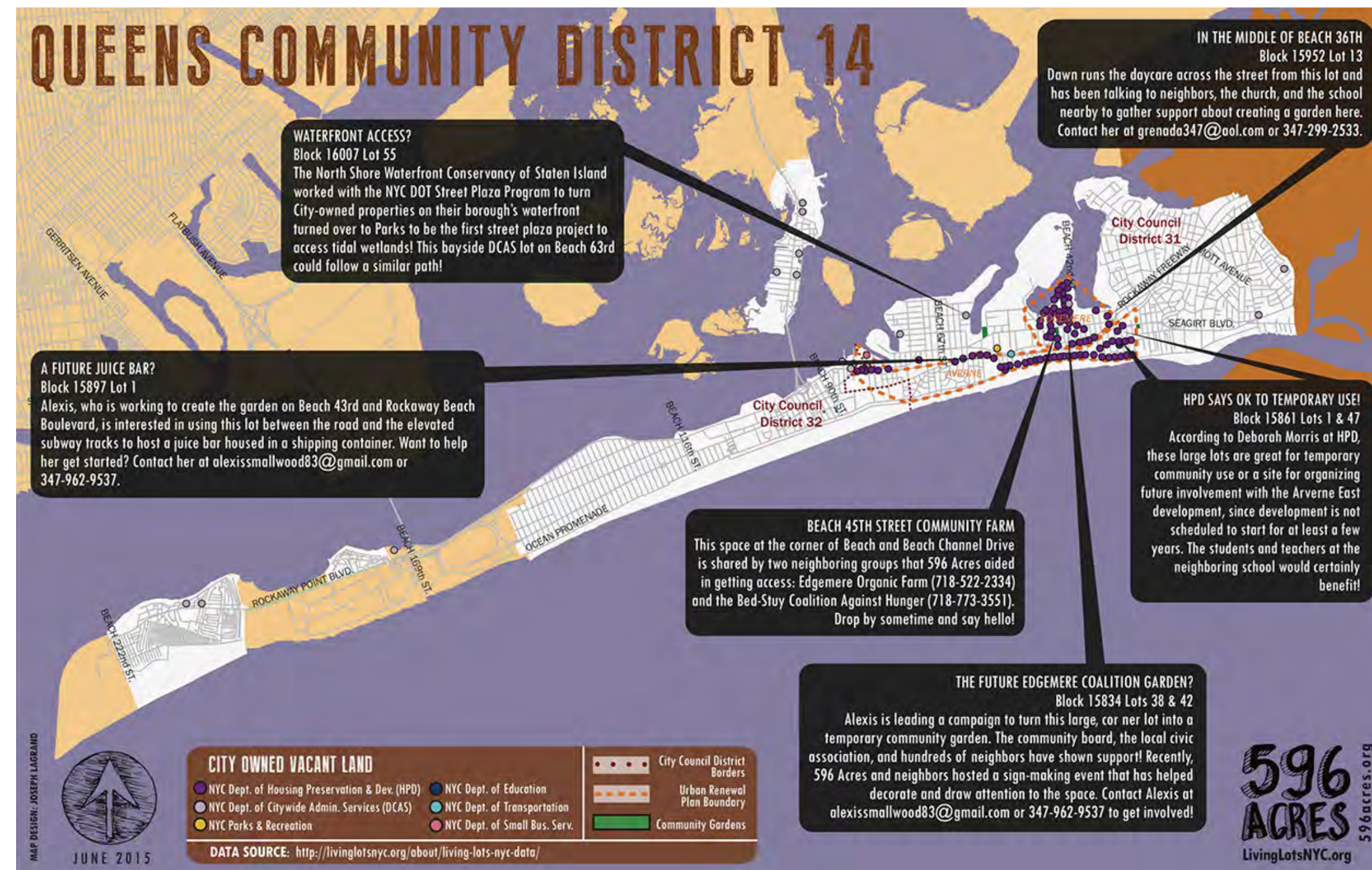
FOOD _ Community Gardens



above left & center:
Edgemere Coalition
Community Garden

top row and above:
Edgemere Farm

FOOD _ Community Gardens



New York City architecture studio New Affiliates has launched an initiative to reuse large-scale models for garden sheds and community spaces in the borough of Queens.

A pilot programme is currently underway in Queens at Edgemere Coalition Community Garden with New York City Parks' GreenThumb division that supports over 550 gardens in the city.

<https://www.dezeen.com/2020/07/31/testbeds-new-affiliates-new-york-city/>



FOOD_ Fruit Orchards



FOOD _ ENERGY



above & right
Ideas from Netherlands: Green houses that operate with solar or geothermal energy on the low-lying (sacrificial) terrain

far-right
Floating farms in operation

Community Visioning in Edgemere, Queens
Community Design Forum #2 01.15.2022



FOOD _ Waterfront Access _ Fishing



above
Delta Cities Coastal Resilience, UA, 2019 Fall
Norton Avenue becomes the axis for waterfront access to the Conch and Norton Basins
Community Visioning in Edgemere, Queens
Community Design Forum #2 01.15.2022

Food _ Recreation _ Fishing



Recreation_ Kayak & Canoeing



Recreation_ Kayak & Canoeing

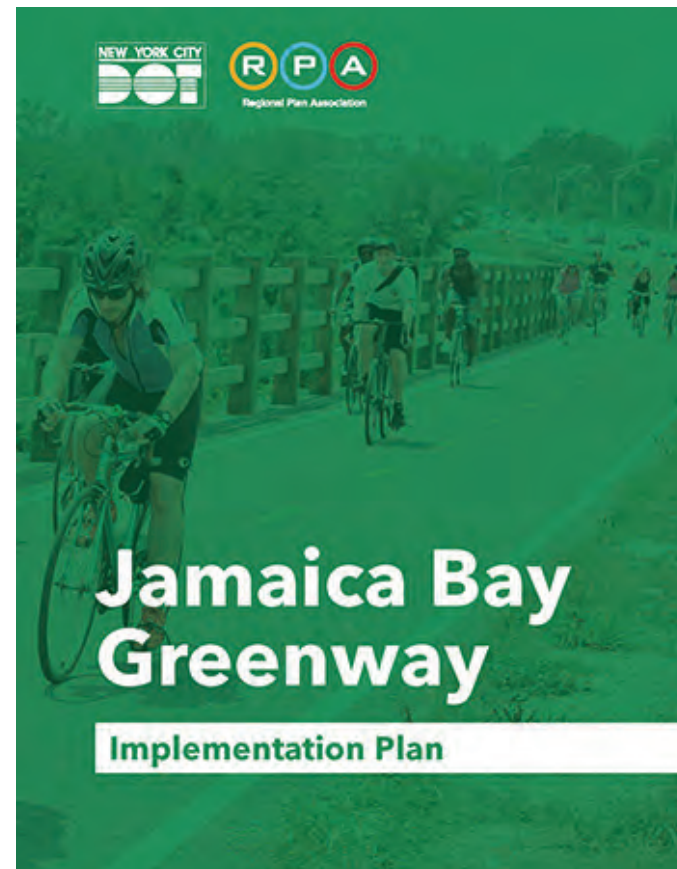


Recreation _ Connectivity _ Biking

<http://www.oasisnyc.net/map.aspx>



Connectivity + Biking



A study of bike paths in Edgemere included maps obtained through open data, NYC 2016 BIKE path.

Edgemere's demographics show that nearly 35 % of the population under 25 years of age. This indicates that if safe bikelanes were implemented and access to bikes were given, biking would complement existing transportation network and augment connectivity. It is recommended not only to develop bike paths/lanes in the East-West directions but also North-South direction, connecting **Bay-to-Beach**.

Along with additional bike paths, it is necessary to set aside space for bike parking stations and repair hubs.

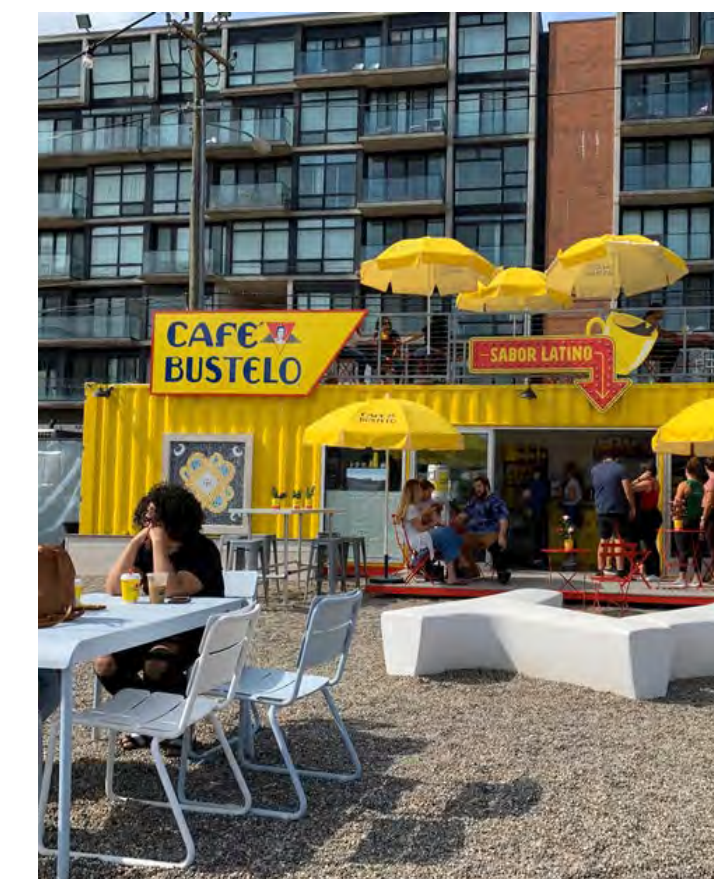
Biking will indirectly contribute to health and wellness.



Tools of Economic Development



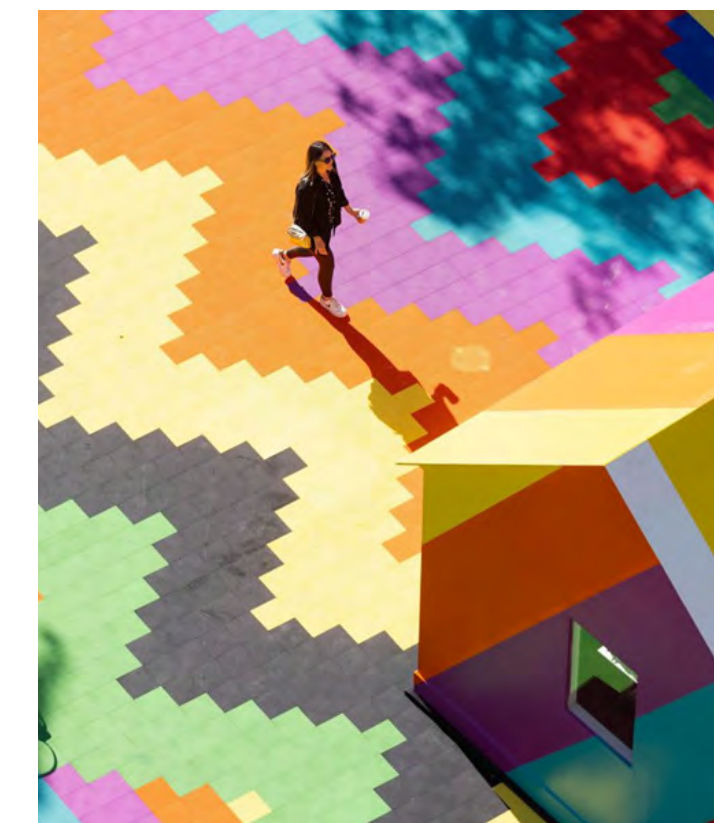
Uniquely Northern Liberties Pod Park, located on 1075 Germantown Avenue, Philadelphia, PA 19123, is a 35,000 square feet of open space which was used for a temporary installation of retail and recreational spaces made of recycled shipping containers during 2019-20.



<https://piazzapodpark.com>

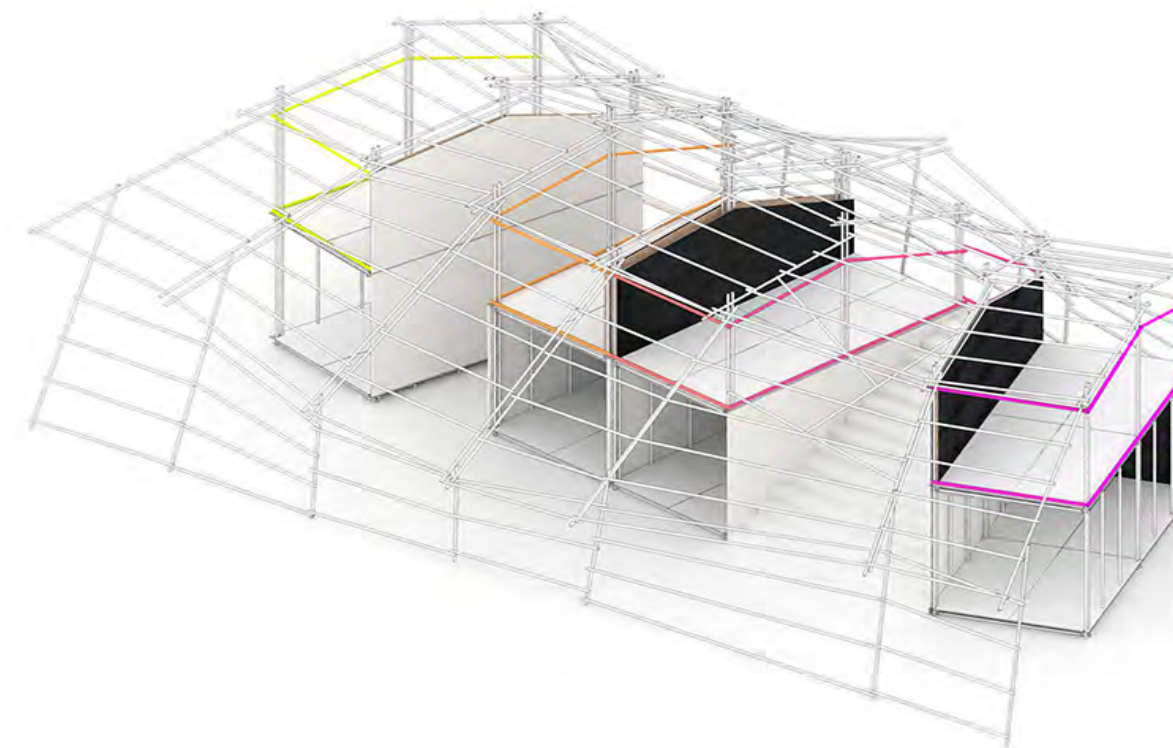
Implementable Solutions: Happy Streets

London's new urban design trend is to brighten up neighborhoods through polychromatic paint jobs by designers. There are 18 pedestrian crossings throughout the city. Below are some examples that are part of New London Fabulous project. (published by Dezeen)



Activity Space: Temporary Structures

SelgasCano with Heloeverything: <https://www.dezeen.com/2016/02/11/selgascano-kibera-school-pavilion-louisiana-art-museum-copenhagen-kenya-nairobi-slum-humanitarian-architecture/>



SelgasCano and Heloeverything designed a Pavilion for Louisiana Art Museum Copenhagen, which was dismantled and shipped to Kenya Nairobi, to replace a dilapidated school in the slums of Kibera.

The school will serve 600 pupils. The pavilion (school) is made of chipboard, sheets of polycarbonate plastic and scaffolding.

Activity Space: Temporary Structures

Temporary Event Space



Activity Space: Temporary Structures

Temporary Event-Exhibition Space by AIRCLAD



Community Visioning in Edgemere, Queens
Community Design Forum #2 01.15.2022

Activity Space: Temporary Structures

DOSIS by DIODON



Community Visioning in Edgemere, Queens
Community Design Forum #2 01.15.2022

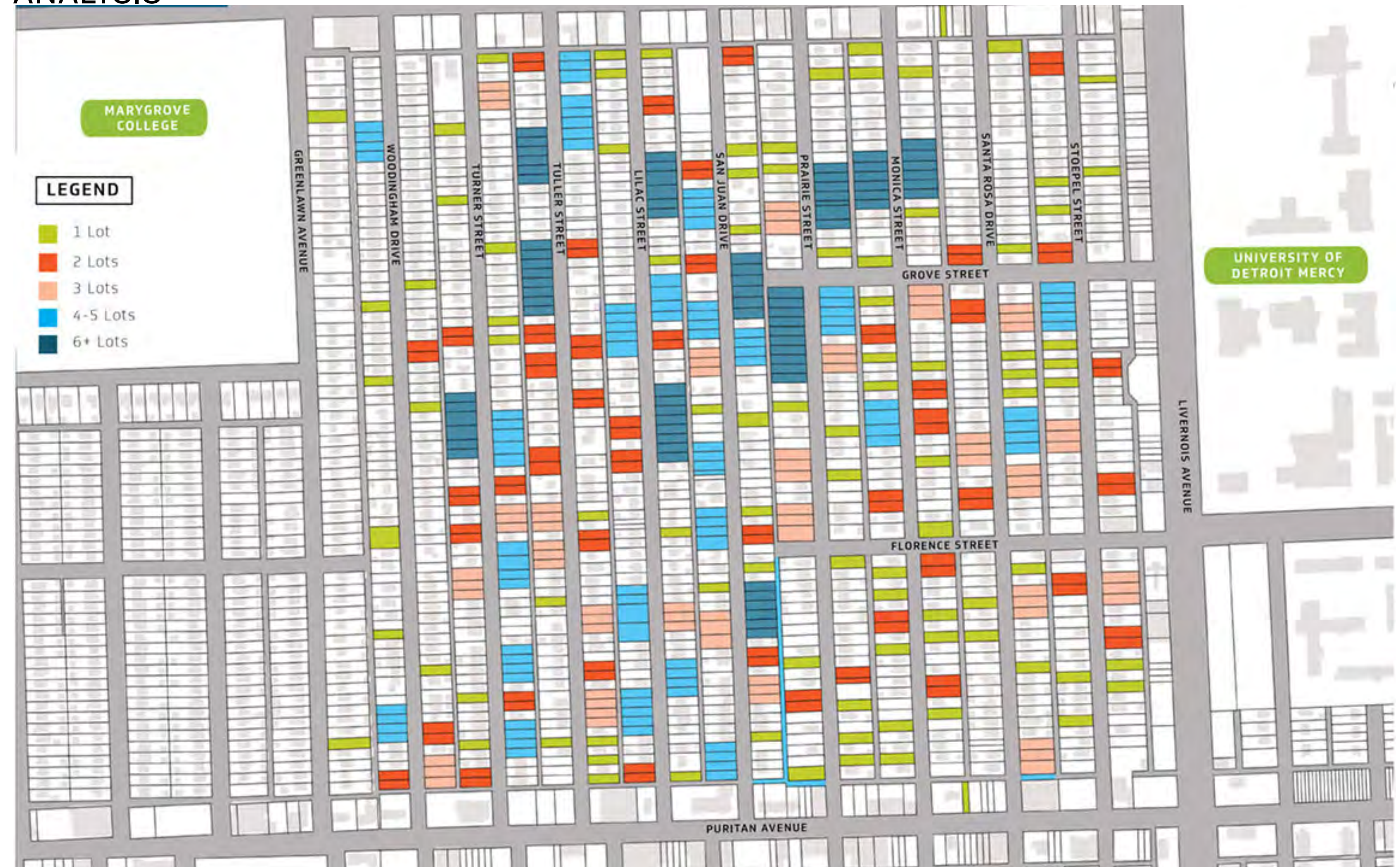
Detroit: Fitzgerald revitalization project

‘More than 20 square miles of vacant land lie within Detroit city limits. The legacy of decades of depopulation and disinvestment, these vacant plots drain the city’s resources and pose threats to neighborhood safety—but they also hold great potential for outdoor recreation, job creation, affordable housing, food security, small businesses, clean air and water, and climate change resiliency. Today, The Trust for Public Land is working with city leaders, urban planners, and neighborhood groups to put that open space to use for the community.’

<https://www.tpl.org/our-work/detroit-fitzgerald-revitalization-project>

Fitzgerald Revitalization Project, which will repurpose ten acres of dispersed city-owned vacant land in the city’s Fitzgerald neighborhood. In partnership with Trust for Public Land, a coalition of agencies have released an RFP to design and landscape architecture firms, requesting proposals for land-based strategies that make life better for Detroiters.

ANALYSIS



Detroit: Fitzgerald revitalization project

continued:



Detroit: Fitzgerald revitalization project

continued:



Places for Coming Together

A Large Table
by
Allan Wexler
2006



Edgemere Project Boundary

